

PRODUCT GROUP 4
TYRES & TUBES



CONTENT

TYRES..... 134
Unit conversion..... 134
Grey and black tyres 3"-26"..... 134

TUBES 140
About valves..... 140
Tubes for manual wheelchairs 141
Tubes for powered wheelchairs..... 141

TYRES

Unit conversion

Air pressure

1 Psi = 0,0069 bar

1 bar = 14,5 Psi

Bar is the atmospheric pressure at the sea level.

Psi is 1 pound of force per square inch.

Grey and black tyres 3"-26"



IA 2202

Size	ETRTO	Pressure psi/bar	Part no. grey	Part no. black
20" x 1 3/8"	37-451	65/4.5	412077	-
22" x 1 3/8"	37-489	65/4.5	412277	-
24" x 1 3/8"	37-540	65/4.5	412477	-
26" x 1 3/8"	37-590	65/4.5	412677	-



IA 2205

Size	ETRTO	Pressure psi/bar	Part no. grey	Part no. black
20" x 1 3/8"	37-451	65/4.5	412061	-
22" x 1 3/8"	37-489	65/4.5	412261	-
22" x 1 3/8"	37-498	65/4.5	412262	-
22" x 1 3/8"	37-501	65/4.5	412263	-
24" x 1 3/8"	37-540	65/4.5	412461	-
26" x 1 3/8"	37-590	65/4.5	412661	-



IA 2601

Size	ETRTO	Pressure psi/bar	Part no. grey	Part no. black
12½" x 2¼"	57-203	35/2.5	411262	431262
16" x 1.75"	47-305	35/2.5	411662	431662
18" x 1.75"	47-355	35/2.5	411862	431862
20" x 1.75"	47-406	35/2.5	412062	432062



IA 2603

Size	ETRTO	Pressure psi/bar	Part no. grey	Part no. black
12½" x 2¼"	57-203	35/2,38	411291	-
16" x 1.75"	47-305	35/2,38	411691	-

TYRES



IA 2610

Size	ETRTO	Pressure psi/bar	Part no. grey	Part no. black
8½" x 2"	-	35/2.5	410863	-
10" x 2"	-	35/2.5	411063	-
12½" x 2¼"	57-203	30/2.1	411263	-



IA 2613

Size	ETRTO	Pressure psi/bar	Part no. grey	Part no. black
5" x 1"	-	85/6.0	410556	-
6" x 1¼"	-	85/6.0	410656	-



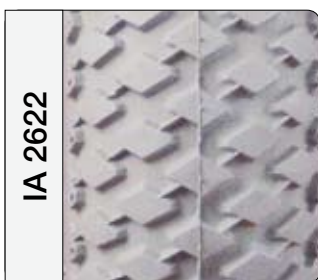
IA 2614

Size	ETRTO	Pressure psi/bar	Part no. grey	Part no. black
5" x 1"	-	85/6.0	410557	-
200 x 50	-	85/6.0	410859	410857



IA 2615

Size	ETRTO	Pressure psi/bar	Part no. grey	Part no. black
4" x 1"	-	100/7.0	410456	-



IA 2622

Size	ETRTO	Pressure psi/bar	Part no. grey	Part no. black
200 x 50	-	36/2,41	410865	430865

TYRES



Size	ETRTO	Pressure psi/bar	Part no. grey	Part no. black
7" x 1¾"	-	36/2.5	410751	-
8½" x 2"	-	36/2.5	410851	-
10" x 2"	-	36/2.5	411051	-



Size	ETRTO	Pressure psi/bar	Part no. grey	Part no. black
6" x 1¼"	-	36/2.5	410652	-
8" x 1¼"	-	36/2.5	410852	-
200 x 50	-	36/2.5	410853	-
2.50" - 3"	-	50/3.5	420351	-
2.80/2.50" - 4"	-	50/3.5	420451	-
3.00" - 4"	-	50/3.5	420452	-



Size	ETRTO	Pressure psi/bar	Part no. grey	Part no. black
22" x 1 3/8"	37-501	65/4.5	412278	-
24" x 1 3/8"	37-540	65/4.5	412478	-

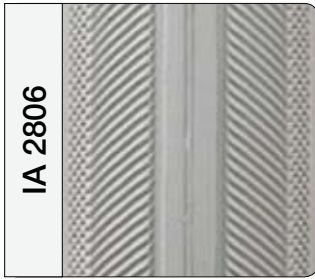


Size	ETRTO	Pressure psi/bar	Part no. grey	Part no. black
3.00" - 4"	-	50/3.5	420461	440461
4.10/3.50" - 4"	-	50/3.5	420462	440462
4.00" - 5"	-	50/3.5	420561	440561
4.10/3.50" - 5"	-	50/3.5	420562	440562
4.10/3.50" - 6"	-	50/3.5	420661	440661
3.00" - 8"	-	50/3.5	420861	440861
3.00" - 10"	-	50/3.5	421061	-



Size	ETRTO	Pressure psi/bar	Part no. grey	Part no. black
3.00" - 4"	-	50/3.5	420472	440472
4.10/3.50" - 5"	-	50/3.5	420572	440572
4.10/3.50" - 6"	-	50/3.5	420672	440672
3.00" - 8"	-	50/3.5	420872	440872

TYRES



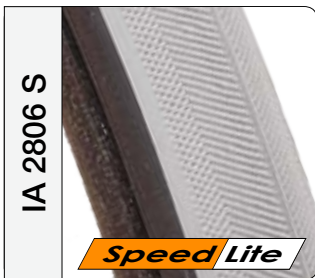
IA 2806

Size	ETRTO	Pressure psi/bar	Weight approx. g	Part no. grey	Part no. grey/black
20" x 1"	25-451	110/7.5	300	412051	412054
22" x 1"	25-489	110/7.5	325	412251	412254
22" x 1"	25-498	110/7.5	335	412252	412255
24" x 1"	25-540	110/7.5	365	412451	412454
25" x 1"	25-559	110/7.5	375	412551	412554
26" x 1"	25-590	110/7.5	395	412651	412654



IA 2805 S

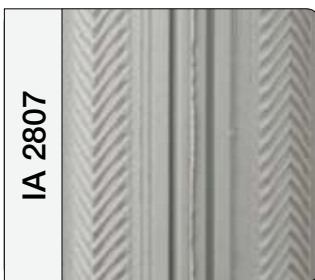
Size	ETRTO	Pressure psi/bar	Part no. grey	Part no. black
300/90" - 8"	-	58/4	-	440873



IA 2806 S

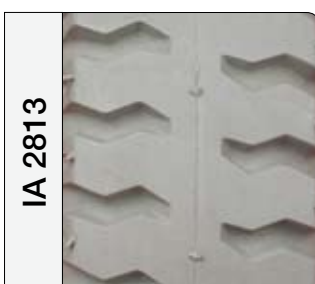
Size	ETRTO	Pressure psi/bar	Weight approx. g	Part no. grey/black
24" x 1"	25-540	110/7,5	225	412481
25" x 1"	25-559	110/7,5	233	412581
26" x 1"	25-590	110/7,5	246	412681

» Tyre with black skinwalls and steel wire



IA 2807

Size	ETRTO	Pressure psi/bar	Part no. grey	Part no. black
20" x 1¼"	32-451	90/6.3	412057	-
22" x 1¼"	32-489	90/6.3	412257	-
22" x 1¼"	32-498	90/6.3	412258	-
24" x 1¼"	32-540	90/6.3	412457	-



IA 2813

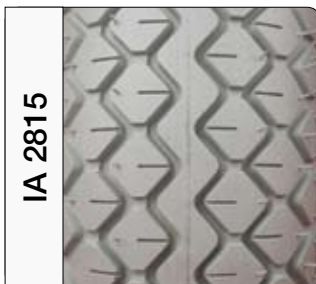
Size	ETRTO	Pressure psi/bar	Part no. grey	Part no. black
2.50" - 4"	-	50/3.5	420471	-

TYRES



IA 2814

Size	ETRTO	Pressure psi/bar	Part no. grey	Part no. black
12½" x 2¼"	57-203	30/2.1	411271	431271
14" x 2"	37-254	35/2,4	411471	-



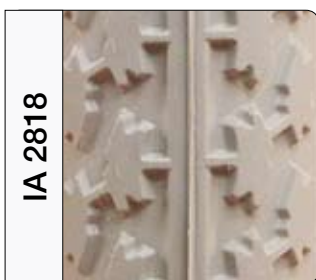
IA 2815

Size	ETRTO	Pressure psi/bar	Part no. grey	Part no. black
4.00" - 5"	-	50/3.5	420571	-



IA 2817

Size	ETRTO	Pressure psi/bar	Part no. grey	Part no. black
2.80/2.50" - 4"	-	50/3.5	420463	-
3.00" - 4"	-	50/3.5	420464	-
2.50" - 8"	-	50/3.5	420864	-



IA 2818

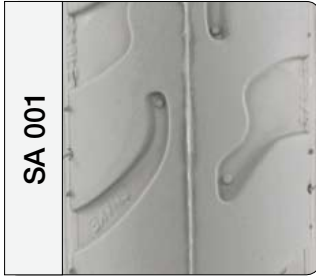
Size	ETRTO	Pressure psi/bar	Weight approx. g	Part no. grey	Part no. grey/black
22" x 1"	25-489	110/7.5	370	412271	412274
24" x 1"	25-540	110/7.5	410	412471	412474



K 422

Size	ETRTO	Pressure psi/bar	Part no. grey	Part no. black
3.00" - 10"	-	36/2.5	421001	-

TYRES



SA 001

Size	ETRTO	Pressure psi/bar	Part no. grey	Part no. black
6" x 1¼"	-	25/1.75	410654	-
7" x 1¼"	-	25/1.75	410754	-
8" x 1¼"	-	25/1.75	410854	-
8½" x 2"	-	25/1.75	410855	-
9" x 1¼"	-	25/1.75	410954	-
10" x 1¼"	-	25/1.75	411054	-
10" x 2"	-	35/1.75	411055	-
12½" x 2¼"	57-203	30/2.1	411254	-
16" x 1.75"	47-406	35/2.5	411654	-



HV 5104

Size	ETRTO	Pressure psi/bar	Part no. grey	Part no. black
16" x 2.125"	57-305	90/6	-	431651
20" x 2.125"	57-406	90/6	-	432051



IA 2003

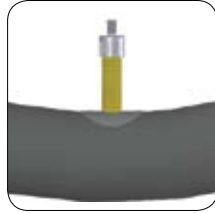
Size	ETRTO	Pressure psi/bar	Part no. grey	Part no. black
24" x 1.75" x 2"	47-507	90/6	-	432436

About valves

Valves - three types:



Car valve/Schrader

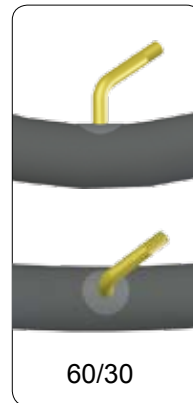
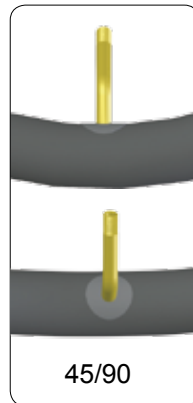
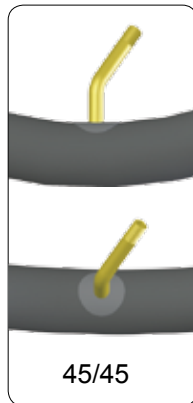
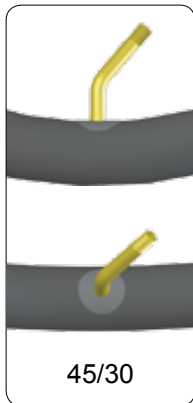
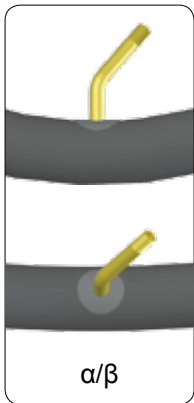
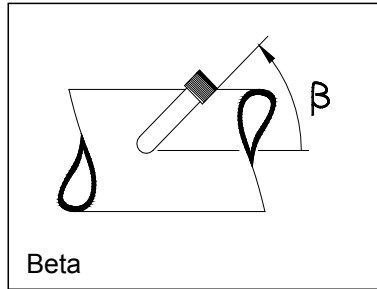
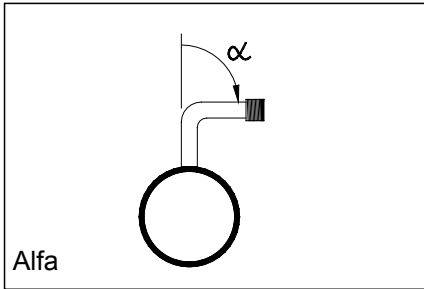


Bicycle valve/Dunlop



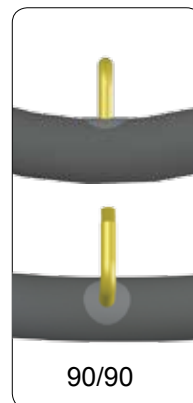
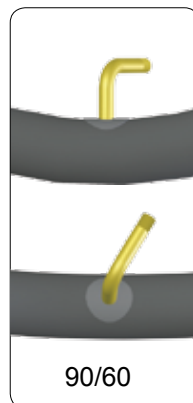
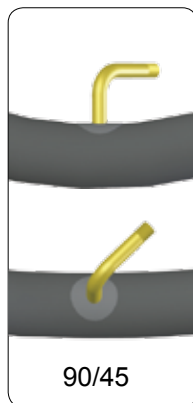
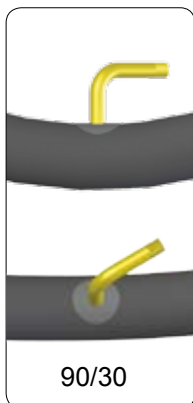
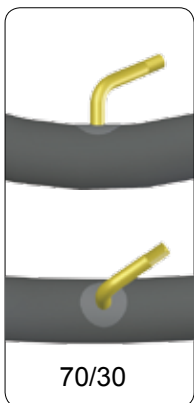
Racer valve/Presta

Valves - varied shapes:



View from the side (α)

View from above (β)



View from the side (α)

View from above (β)

Tubes for manual wheelchairs

Size	ETRTO	Valve angle α/β	Part no.		
			Schrader	Dunlop	Presta
5" x 1¼"	-	70/30	450510	-	-
6" x 1¼"	-	45/45	450601	-	-
7" x 1.75"	-	90/90	450703	-	-
7" x 1.75"	-	45/45	450704	-	-
200 x 50	-	90/90	450801	-	-
8" x 1¼"	-	45/45	450805	-	-
10" x 2"	-	Straight	451006	-	-
12½" x 2¼"	62-203	Straight	451202	-	-
16" x 1.75" x 2.125"	47/57-305	Straight	451601	-	-
18" x 1.75" x 2.125"	47-355	Straight	451802	-	-
20" x 1½"	37-451	Straight	452001	-	-
20" x 1.75" x 2.125"	47/57-406	Straight	452002	-	-
20" x 1"	25-451	Straight	452005	-	-
22" x 1½"	37-489/501	Straight	452201	-	-
22" x 1"	25-489/501	Straight	452202	-	-
24" x 1"	25-540	Straight	452406	-	-
24" x 1" (extra light)	20/28-540	Straight	-	-	472410
24" x 1½"	37-540	Straight	452403	472401	-
24" x 1.75" x 2.125"	57-507	Straight	452404	-	-
25" x 1"	25-559	Straight	452501	-	-
25" x 1" (extra light)	18/25-559	Straight	-	-	472510
26" x 1"	25-590	Straight	452601	-	-
26" x 1½"	37-590	Straight	452602	-	-

Tubes for powered wheelchairs

Size	ETRTO	Valve		Part no. Schrader
		α/β		
2.50" - 3" (210 x 65)	-	90/90		450301
2.80/2.50" - 4"	-	90/90		450401
3.00" - 4" (260 x 85)	-	90/90		450402
4.00" - 4"	-	90/90		450404
4.00" - 4"	-	45/45		450406
4.10/3.50" - 4"	-	90/90		450403
4.10/3.50" - 5"	-	90/90		450501
4.10/3.50" - 6"	-	90/90		450611
2.50" - 8"	-	90/90		450810
3.00" - 8"	-	90/90		450811
3.00" - 8"	-	Straight		450812