

Front forks & bearing housings

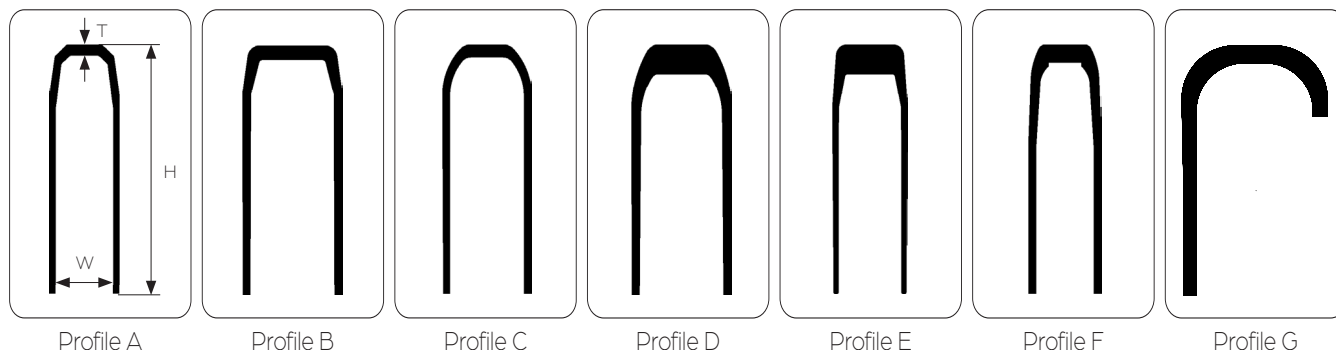
Forks in aluminium

Forks in plastic

Bearing housings

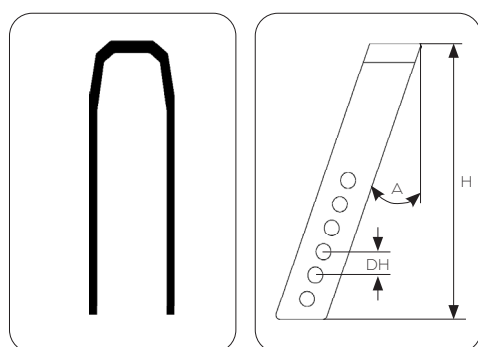


Front forks



Front fork profile extrusions

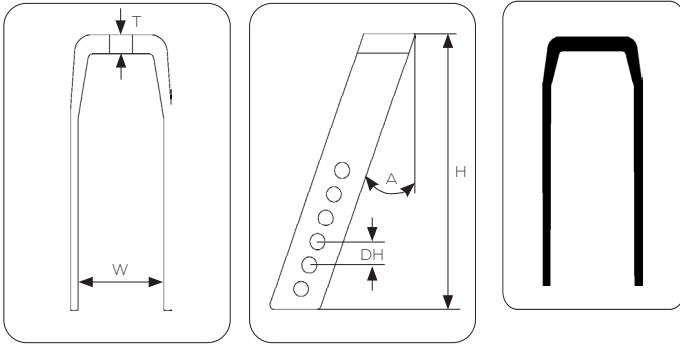
Profile	Specifications	Inner width (W) mm	Height (H) mm	Thickness (T) mm	Part. no. profile
A	39 mm front fork profile. Untreated aluminium	39	170	8	C-657001
B	45 mm front fork profile. Untreated aluminium	45	180	10	C-657002
B	60 mm front fork profile. Untreated aluminium	60	180	10	C-657003
C	45 mm front fork profile. Untreated aluminium	45	180	10	C-657004
C	53 mm front fork profile. Untreated aluminium	53	180	9	C-657012
D	60 mm front fork profile. Untreated aluminium	60	180	21	C-657014
E	45 mm front fork profile. Untreated aluminium	45	180	21	C-657005
F	39 mm front fork profile. Untreated aluminium	39	170	12	C-657013
G	Monoleg front fork profile. Untreated aluminium	83	177	12,5	C-657024



Front forks in aluminium Profile A

- » Extruded aluminium profiles
- » Strong hardened aluminium
- » ø8,2 mm holes for wheel fitting
- » Other dimensions on request

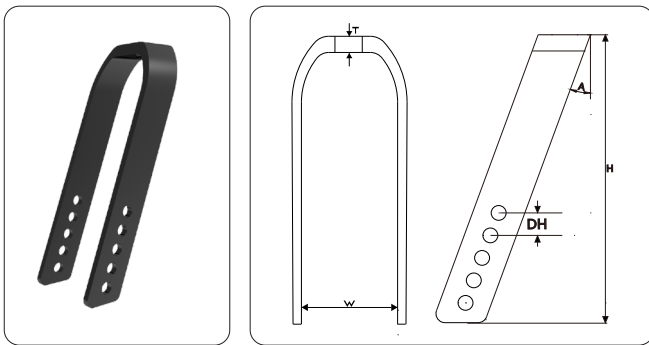
Inner width W (mm)	Height H (mm)	Thickness T (mm)	Angle A (degrees)	No. of side holes	Dist. betw. side holes DH (mm)	Weight (g)	Part. no. ø12 black
39	65	8	24	1	-	50	653927
39	92	8	24	2	12.5	65	653929
39	120	8	20	4	12.5	85	653931
39	170	8	16	5	12.5	115	653905



Front forks in aluminium Profile B

- » Extruded aluminium profiles
- » Strong hardened aluminium
- » $\varnothing 8,2$ mm holes for wheel fitting
- » Other dimensions on request

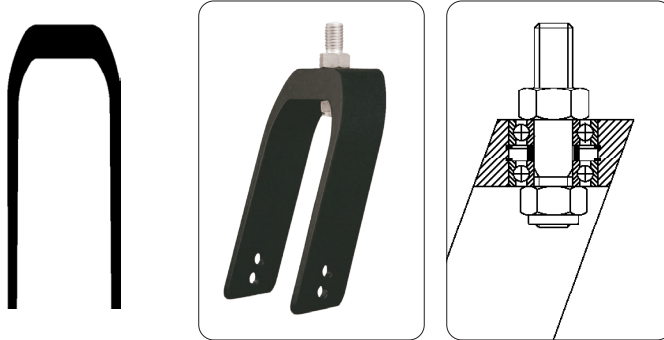
Inner width W (mm)	Height H (mm)	Thickness T (mm)	Angle A (degrees)	No. of side holes	Dist. betw. side holes DH (mm)	Weight (g)	Part. no. $\varnothing 12$ silver	Part. no. $\varnothing 12$ black
45	92	10	24	2	12.5	75	-	654573
45	120	10	20	4	12.5	100	-	654575
45	146	10	20	6	12.5	130	-	654504
45	180	10	16	5	12.5	150	654515	654516
60	120	10	20	4	12.5	130	656074	-
60	146	10	20	4	12.5	165	-	656078
60	180	10	16	5	12.5	170	-	656068



Extra long aluminium fork Profile C

- » Max size of wheel: $\varnothing 300$ mm
- » Outer Width: 62 mm
- » Side holes $\varnothing 8,2$ mm

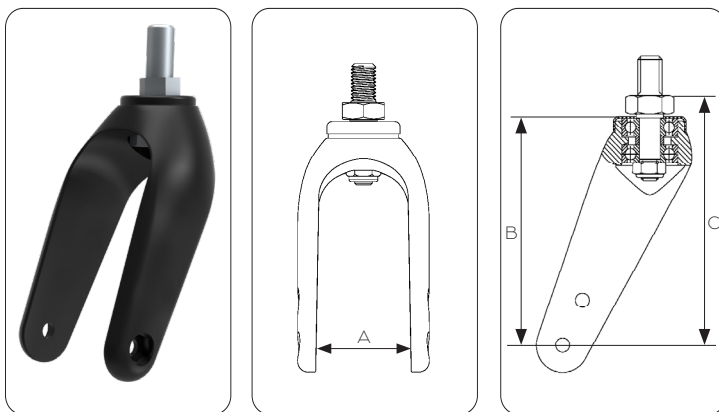
Inner width W (mm)	Height H (mm)	Thickness T (mm)	Angle A (degrees)	No. of side holes	Dist. betw. side holes DH (mm)	Weight (g)	Part. no. $\varnothing 12$ black
45	120	10	20	4	12.5	100	654575
45	146	10	20	6	12.5	130	654504
45	146	10	16	6	12.5	-	-
45	180	10	16	2	37,5	-	654546



Aluminium front forks with bearings and axle tap Profile D

- » Available with M12 x 1.75 or M14 x 2 forged axle tap
- » Max wheel diameter is 200 mm
- » Other lengths on request

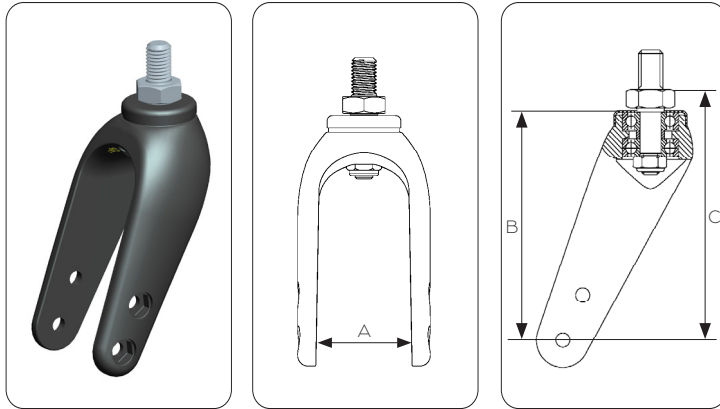
Inner width W (mm)	Height H (mm)	Top thickness T (mm)	Angle A (degrees)	No. side holes	Dist. between side holes DH (mm)	Thread	Weight (g)	Part. no. Black
60	151	21	20	2	12,5	M14	350	656064



Front forks in cast aluminium for power chairs

- » Available in two heights
- » Very strong

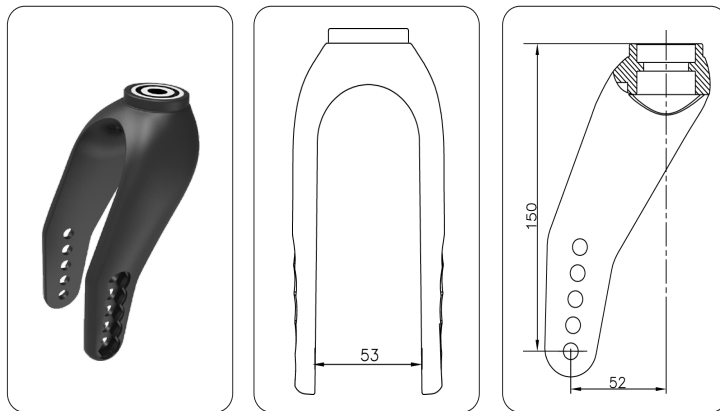
Inner width W (mm)	Height B (mm)	C (mm)	Max. wheel diameter (mm)	Weight incl. axle tap (g)	Part. no. excl. axle tap	Part. no. incl. axle tap
60	128	140	170	-	-	65801R
60	151	164	210	-	-	658001



Front fork – plastic

- » Standard with M14 x 2 x 20 mm forged axle tap
- » Side holes: 2 x ø8 mm
- » Plastic caps supplied for unused axle holes
- » Front forks without axle tap are incl. ø12mm bearings, distance tube and plastic cap.
- » Material: PA + GF

Inner width (mm)	B (mm)	C (mm)	Max. wheel diameter (mm)	Weight incl. axle tap (g)	Part. no. excl. axle tap	Part. no. incl. axle tap
40	102	114	150	310	654096	654097
45	126	139	200	354	654596	-
60	126	139	200	340	656096	656097



Front fork with "sunk" screws in plastic – with or without bolt

- » Total Height: 162 mm
- » Outer Width: 76 mm
- » Axle hole: 12 mm
- » Side holes: 5 x ø8 mm
- » Distance between side holes: 12,7 mm
- » Material: PA + GF or PP + GF

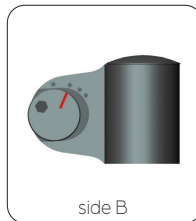
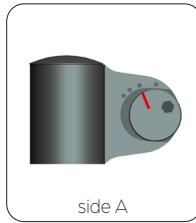
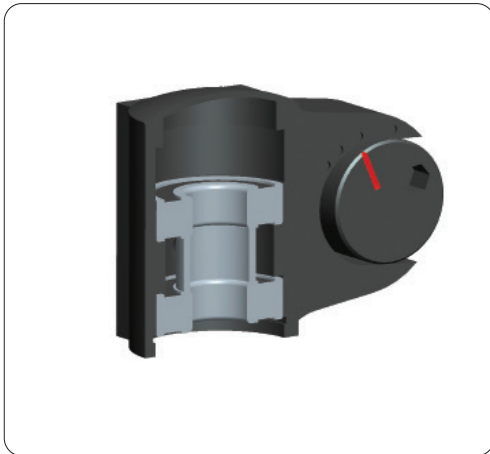
Description	Inner width (mm)	B (mm)	Max. wheel diameter (mm)	Weight (g)	Part. no. PA+GF	Part. no. PP+GF
No bolt	53	150	245	230	65530F	65530G
With bolt 1910M	53	150	245	230	65530F	65530J



omobic by mbl

Check out our Omobic range of front forks with suspension in the Omobic catalogue!

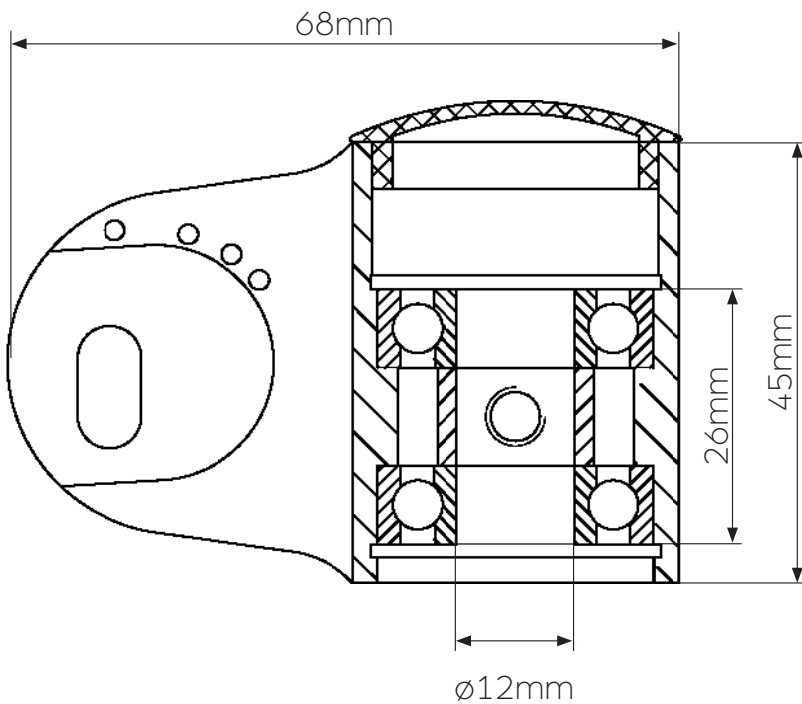
Bearing housings

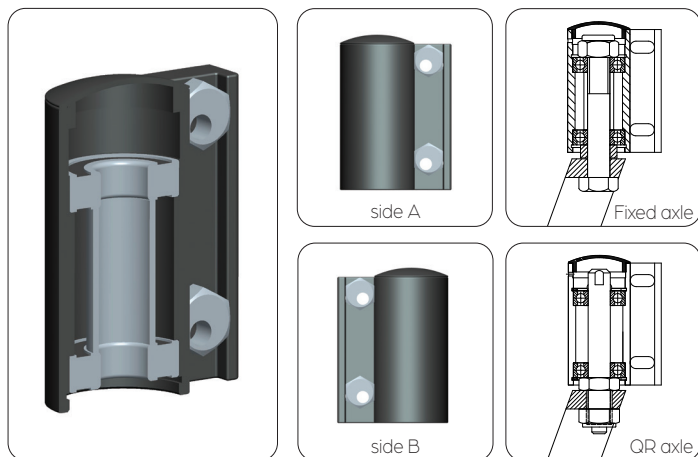


Bearing housing – Type A

- » Black anodized aluminium
- » Angle adjustable bearing housing
- » Possibility for direction locking
- » Easy to adjust +/- 7° range
- » Standard for Ø12 mm fixed axles or Ø12mm quick-release axles

Description	Part no. side A	Part no. side B
Bearing housing for fixed axle (incl.bearings, distance tube, adjusting washer and push button)	MBS550-1	MBS551-1





Bearing housings – Type B

- » Black anodized aluminium
- » Standard for Ø12 mm fixed axles or Ø12mm quick-release axles
- » Can be adjusted for different mounting angles using eccentric nuts

Description	Part no. side A	Part no. side B
Bearing housings excl. bearings and other components	661301	661302
Bearing housing for fixed axle (incl. bearings, distance tube, eccentric nut and push button)	661351	661352
Bearing housing for QR axle (incl. bearings, eccentric nut and push button)	661353	661354

