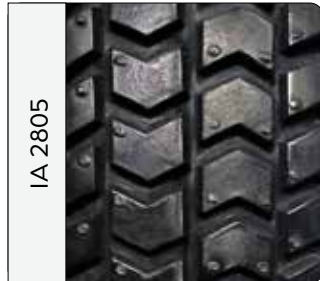


# High performance tyre for power wheelchairs

Extra thick and durable, no flat spot



Size	ETRTO	Pressure psi/bar	Part no. grey	Part no. dark grey	Part no. black
3.00" - 8"	-	50/3.5		420807	440809N



# Standard tyres for power wheelchairs



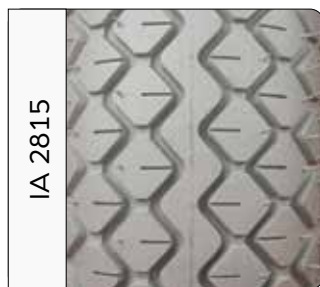
Size	ETRTO	Pressure psi/bar	Part no. grey	Part no. black	Part no. black Non Marking
6" x 1 1/4"	32-87	36/2.5	410652	-	-
8" x 1 1/4"	32-137	36/2.5	410852	410852B	430852
200 x 50	50-94	36/2.5	410853	430853	440302N
2.50" - 3"	-	50/3.5	420351	-	-
2.80/2.50" - 4"	-	50/3.5	420451	420453	-
3.00" - 4"	-	50/3.5	420452	420401	420401N



Size	ETRTO	Pressure psi/bar	Part no. grey	Part no. dark grey	Part no. black
2.80/2.50-4"	-	50/3.5	-	420460-1	440460
3.00" - 4"	-	50/3.5	420461	420461-1	440461
4.10/3.50" - 4"	-	50/3.5	420462	-	440462
4.00" - 5"	-	50/3.5	420561	-	440561
4.10/3.50" - 5"	-	50/3.5	420562	-	440562
4.10/3.50" - 6"	-	50/3.5	420661	-	440661
3.00" - 8"	-	50/3.5	420861	420861-1	440861
3.00" - 10"	-	50/3.5	421061	-	-



Size	ETRTO	Pressure psi/bar	Part no. grey	Part no. dark grey	Part no. black	Part no. black Non Marking
2.80/2.50-4"	-	50/3.5	-	420473-1	440473	-
3.00" - 4"	-	50/3.5	420472	420472-1	440472	440472N
4.10/3.50"	-	50/3.5	420572	-	440572	-
4.10/3.50"	-	50/3.5	420672	-	440672	-
3.00" - 8"	-	50/3.5	420872	420872-1	440872	440809N



Size	ETRTO	Pressure psi/bar	Part no. grey	Part no. black
4.00" - 5"	-	50/3.5	420571	440571
4.1/3.5-5	-	50/3.5	-	440500



Size	ETRTO	Pressure psi/bar	Part no. grey	Part no. black Non Marking
2.80/2.50" - 4"	-	50/3.5	420463	440463N
3.00" - 4"	-	50/3.5	420474	440464N
2.50" - 8"	-	50/3.5	420864	420801N
3.00" - 4"	-	50/3.5	420474	-



Size	ETRTO	Pressure psi/bar	Part no. grey	Part no. black Non Marking
200 x 50	-	36/2,41	410865	430865

## Tubes for power wheelchairs

Inches	ETRTO	Valve $\alpha/\beta$	Part no. Schrader
8"	2.50 - 3	90/90	450301
9"	2.80/2.50 - 4	90/90	450401
10"	3.00 - 4	90/90	450402
12"	4.00 - 4	90/90	450404
12"	4.00 - 4	45/45	450406
11"	4.10/3.50 - 4	90/90	450403
12"	4.10/3.50 - 5	90/90	450501
13"	4.10/3.50 - 6	90/90	450611
13"	2.50 - 8	90/90	450810
14"	3.00 - 8	90/90	450811
14"	3.00 - 8	Straight	450812